



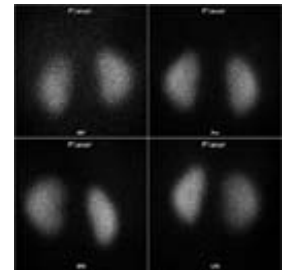
Scan for mobile link.

Renal Scintigraphy

What is renal scintigraphy?

Renal scintigraphy, also known as "renal scanning" or "renal imaging," refers to several examinations using radioisotopes that evaluate the function and anatomy of the kidneys. Renal scintigraphy is one of many imaging methods used to evaluate the kidneys. Ultrasound, computed tomography (CT), and magnetic resonance imaging (MRI) can also be used. Your doctor will determine which of these examinations will provide the best information about your kidneys.

Different types of renal scans are used to examine different aspects of the kidneys and kidney functioning; however, all of these procedures involve the injection of a radiotracer or radioisotope, or imaging substance that emits a tiny amount of radioactivity, into the patient. Because the radiotracer accumulates differently in different kinds of tissue, it can help physicians determine if something is wrong with the kidneys. Renal scintigraphy can also be used to evaluate a transplanted kidney.



After injection, the radiotracer eventually accumulates in the kidneys, where it gives off energy in the form of gamma rays. This energy is detected by a device called a gamma camera. The camera works with a computer to measure the amount of radiotracer absorbed by the body and to produce special pictures offering details on both the structure and function of organs and tissues.

What are some common uses of the procedure?

Four types of renal imaging help determine whether the kidneys are working normally or abnormally.

- Cortical renal scintigraphy detects the amount of functioning kidney tissue through images taken with a gamma camera approximately three hours after the injection of a radiotracer.
- Renal perfusion and function imaging examines blood flow to the kidneys and identifies potential narrowing of the renal arteries. Through a series of images taken over 20 to 30 minutes immediately after radiotracer injection, it also helps determine how well the kidneys are functioning.
- Diuretic renal scintigraphy detects kidney blockages through images taken before and after the introduction of a diuretic to move urine through the kidneys.
- ACE-inhibitor renal scintigraphy helps determine if the cause of a patient's high blood pressure is coming from the kidneys by comparing kidney images before and after taking a blood pressure medication called an "ACE-inhibitor."

These procedures can be valuable for identifying kidney failure and/or transplant-related complications, as well as discovering kidney-related injuries.

How should I prepare?

Preparation can vary widely based on the type of scan being conducted. You may be asked to drink extra fluid or possibly receive intravenous (IV) fluids. You may also be given a diuretic to increase urine production. In some cases, the bladder may need to remain empty during the scan, necessitating the insertion of a catheter. In other cases, you may be asked to go to the bathroom and empty your bladder prior to imaging. You also may be asked to discontinue use of some medications prior to your exam.

You may be asked to wear a gown during the exam or you may be allowed to wear your own clothing.

Women should always inform their physician or technologist if there is any possibility that they are pregnant or if they are breastfeeding. See the Safety page (www.RadiologyInfo.org/en/safety/) for more information about pregnancy and breastfeeding related to nuclear medicine imaging.

You should inform your physician and the technologist performing your exam of any medications you are taking, including vitamins and herbal supplements. You should also inform them if you have any allergies and about recent illnesses or other medical conditions.

Also tell your physician if you are taking non-steroidal anti-inflammatories (NSAIDs).

Jewelry and other metallic accessories should be left at home if possible, or removed prior to the exam because they may interfere with the procedure.

You will receive specific instructions based on the type of scan you are undergoing.

What does the equipment look like?

Nuclear medicine procedures are performed using one of three systems: a gamma camera, single photon emission computed tomography (SPECT) or positron emission tomography (PET).

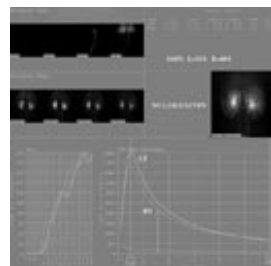
The gamma camera, which is encased in metal, is capable of detecting radiation and taking pictures from different angles. A gamma camera does not emit any radiation. It may be suspended over the examination table or it may be beneath the table. Often, gamma cameras are dual-headed with one camera next to the other at a 90 degree angle. In some imaging centers, the gamma camera is located beneath the exam table and out of view. The camera may be located within a large, doughnut-shaped scanner similar in appearance to a computed tomography (CT) scanner.



SPECT uses a gamma camera that rotates around the body to produce more detailed, three-dimensional images.

How does the procedure work?

With ordinary x-ray examinations, an image is made by passing x-rays through the body from an outside source. In contrast, nuclear medicine procedures use a radioactive material called a radiopharmaceutical or radiotracer, which is injected into your bloodstream, swallowed or inhaled as a gas. This radioactive material accumulates in the organ or area of your body being examined, where it gives off a small amount of energy in the form of gamma rays. A gamma camera, PET scanner, or probe detects this energy and with the help of a computer creates pictures offering details on both the structure and function of organs and tissues in your body.

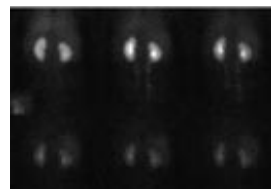


Unlike other imaging techniques, nuclear medicine imaging exams focus on depicting physiologic processes within the body, such as rates of metabolism or levels of various other chemical activity, instead of showing anatomy and structure. Areas of greater intensity, called "hot spots," indicate where large amounts of the radiotracer have accumulated and where there is a high level of chemical or metabolic activity. Less intense areas, or "cold spots," indicate a smaller concentration of radiotracer and less chemical activity.

How is the procedure performed?

Nuclear medicine imaging is usually performed on an outpatient basis, but is often performed on hospitalized patients as well.

Prior to imaging, you will be injected with a small amount of radiotracer. Diuretic renal scintigraphy, ACE-inhibitor renal scintigraphy, renal perfusion and function imaging will typically begin imaging while the tracer is being administered. Cortical imaging requires a three hour delay after tracer administration for imaging to begin.



You will be positioned on an examination table. If necessary, a nurse or technologist will insert an intravenous (IV) line into a vein in your hand or arm.

When it is time for the imaging to begin, the gamma camera will take a series of images. The camera may rotate around you or it may stay in one position and you will be asked to change positions in between images. While the camera is taking pictures, you will need to remain still for brief periods of time.

Depending upon the type of procedure, renal imaging can last from 30 minutes to 2 hours.

What will I experience during and after the procedure?

You will feel a slight pin prick when the radiotracer is injected. After the injection, you could experience a brief metallic taste.

You will be asked to lie on your back and will need to remain as still as possible while the camera takes each picture.

It is important that you remain still while the images are being recorded. Though nuclear imaging itself causes no pain, there may be some discomfort from having to remain still or to stay in one particular position during imaging.

In some cases, the camera may move very close to your body. This is necessary to obtain the best quality images. If you are claustrophobic, you should inform the technologist before your exam begins.

When the examination is completed, you may be asked to wait until the technologist checks the images in case additional images are needed. Occasionally, more images are obtained for clarification or better visualization of certain areas or structures. The need for additional images does not necessarily mean there was a problem with the exam or that something abnormal was found, and should not be a cause of concern for you.

Unless your physician tells you otherwise, you may resume your normal activities after your nuclear medicine scan. If any special instructions are necessary, you will be informed by a technologist, nurse or physician before you leave the nuclear medicine department.

Who interprets the results and how do I get them?

A radiologist or other physician who has specialized training in nuclear medicine will interpret the images and forward a report to your referring physician.

What are the benefits vs. risks?

Benefits

- The information provided by renal imaging is unique and often unattainable using other imaging procedures.
- Renal imaging yields useful information needed to make a diagnosis or to determine appropriate treatment, if any.

Risks

- Because the doses of radiotracer administered are small, diagnostic nuclear medicine procedures result in low radiation exposure, acceptable for diagnostic exams. Thus, the radiation risk is very low compared with the potential benefits.
- Nuclear medicine diagnostic procedures have been used for more than five decades, and there are no known long-term adverse effects from such low-dose exposure.
- The risks of the treatment are always weighed against the potential benefits for nuclear medicine therapeutic procedures. You will be informed of all significant risks prior to the treatment and have an opportunity to ask questions.
- Allergic reactions to radiopharmaceuticals may occur but are extremely rare and are usually mild. Nevertheless, you should inform the nuclear medicine personnel of any allergies you may have or other problems that may have occurred during a previous nuclear medicine exam.
- Injection of the radiotracer may cause slight pain and redness which should rapidly resolve.

What are the limitations of renal imaging?

Renal images cannot differentiate between cysts and tumors.

Nuclear medicine procedures can be time-consuming. You will be informed as to how often and when you will need to return to the nuclear medicine department for further procedures.

The resolution of structures of the body with nuclear medicine may not be as clear as with other imaging techniques, such as CT or MRI. However, nuclear medicine scans are more sensitive than other techniques for a variety of indications, and the functional information gained from nuclear medicine exams is often unobtainable by any other imaging techniques.

Disclaimer

This information is copied from the RadiologyInfo Web site (<http://www.radiologyinfo.org>) which is dedicated to providing the highest quality information. To ensure that, each section is reviewed by a physician with expertise in the area presented. All information contained in the Web site is further reviewed by an ACR (American College of Radiology) - RSNA (Radiological Society of North America) committee, comprising physicians with expertise in several radiologic areas.

However, it is not possible to assure that this Web site contains complete, up-to-date information on any particular subject. Therefore, ACR and RSNA make no representations or warranties about the suitability of this information for use for any particular purpose. All information is provided "as is" without express or implied warranty.

Please visit the RadiologyInfo Web site at <http://www.radiologyinfo.org> to view or download the latest information.

Note: Images may be shown for illustrative purposes. Do not attempt to draw conclusions or make diagnoses by comparing these images to other medical images, particularly your own. Only qualified physicians should interpret images; the radiologist is the physician expert trained in medical imaging.

Copyright

This material is copyrighted by either the Radiological Society of North America (RSNA), 820 Jorie Boulevard, Oak Brook, IL 60523-2251 or the American College of Radiology (ACR), 1891 Preston White Drive, Reston, VA 20191-4397. Commercial reproduction or multiple distribution by any traditional or electronically based reproduction/publication method is prohibited.

Copyright © 2011 Radiological Society of North America, Inc.